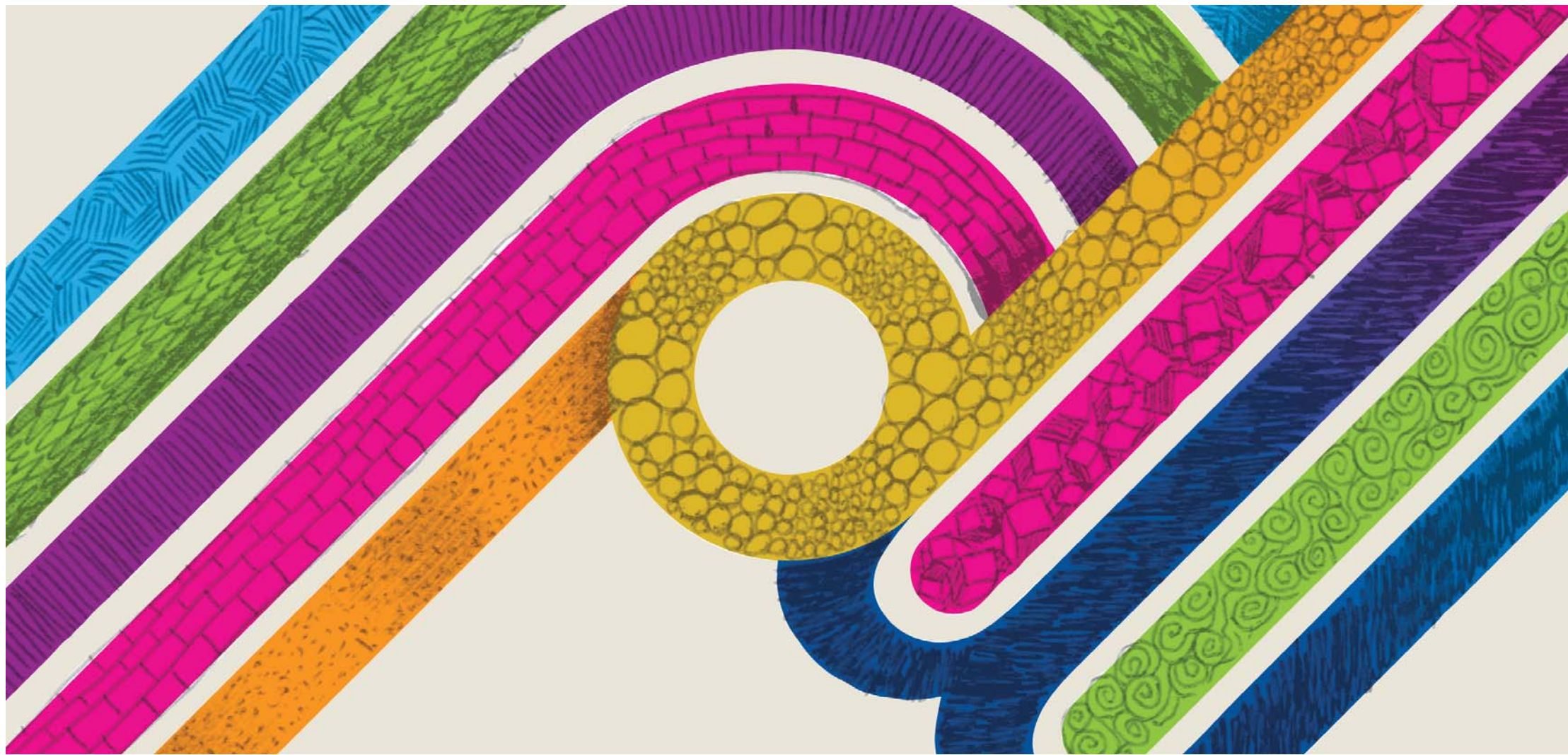


MOOR PARK HIGH SCHOOL







WELCOME TO MOOR PARK HIGH SCHOOL AND SIXTH FORM



I am delighted to welcome you to Moor Park High School and Sixth Form. Our goal is that all of our students will be able to access higher education and participate fully in our democratic society.

We do this first and foremost by having high expectations of our students, ensuring that they achieve to their best and behave in an exemplary way.

We believe that there are no excuses for underachievement and our excellent teachers, focused academic curriculum and extra-curricular provision ensures that no young people are left behind.

This is a small, friendly and caring school where every young person is known and where the time is taken to guide, develop and nurture them. We care, and we go the extra mile because the future of every young person matters.

Our Sixth Form consistently delivers 100% pass rates, with a steady stream of our young people going onto excellent universities and bright futures. At GCSE level, our students progress better than other students nationally and at key stage three, we take the time to both provide a stable and tailored induction from Primary to Secondary and to develop the essential subject specific skills and knowledge that are crucial to successful further study.

If you are looking for a school that offers high quality care and high academic expectations then we are the school for you. I look forward to working with parents and carers to deliver the bright futures that our young people deserve.

Head Teacher: **Mr B Corbett**

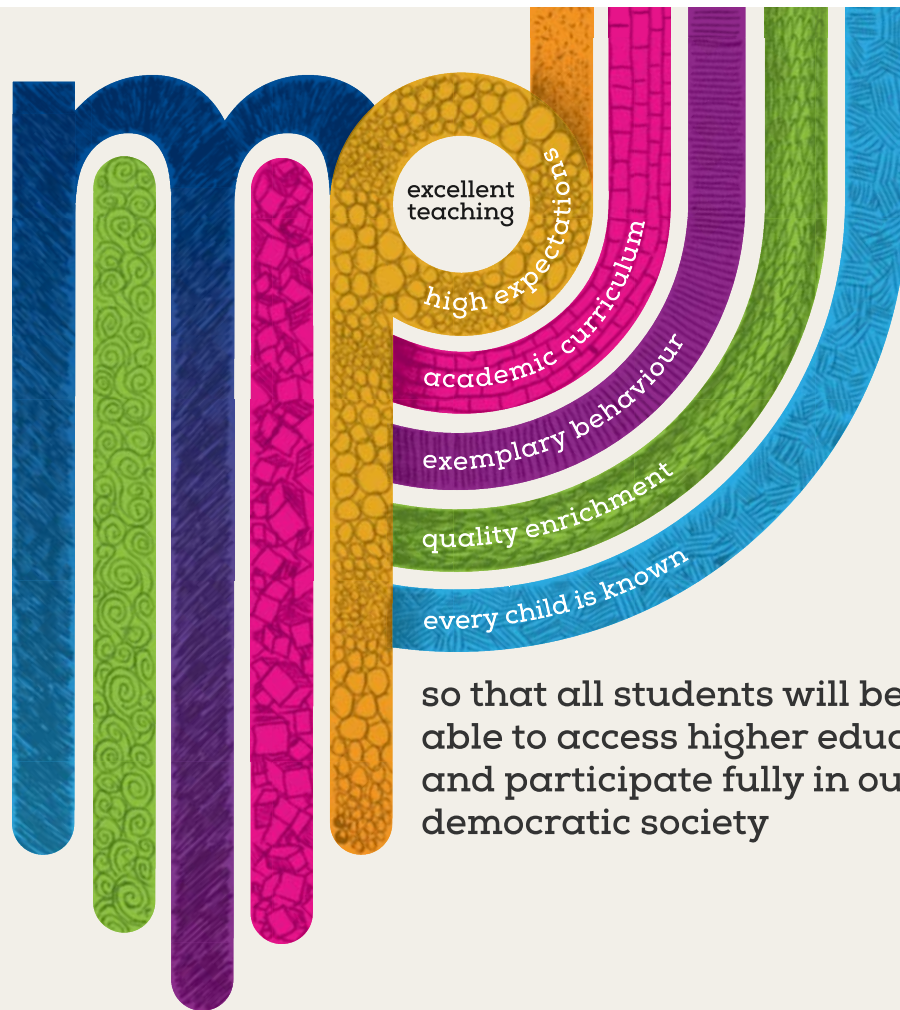
I hope that you decide to join us.



'EXCELLENCE IN ALL'

A COMMITMENT TO YOU AS WELL AS THE STANDARD WE SET OURSELVES. A CONSTANT REMINDER TO EVERYONE AT MOOR PARK TO STRIVE TO ACHIEVE THE VERY BEST IN ALL ASPECTS OF SCHOOL LIFE.

NEVER ACCEPTING ANYTHING LESS.



so that all students will be
able to access higher education
and participate fully in our
democratic society







ENSURING A SMOOTH TRANSITION FROM PRIMARY SCHOOL

We are committed to the belief that happy, settled students make successful learners.



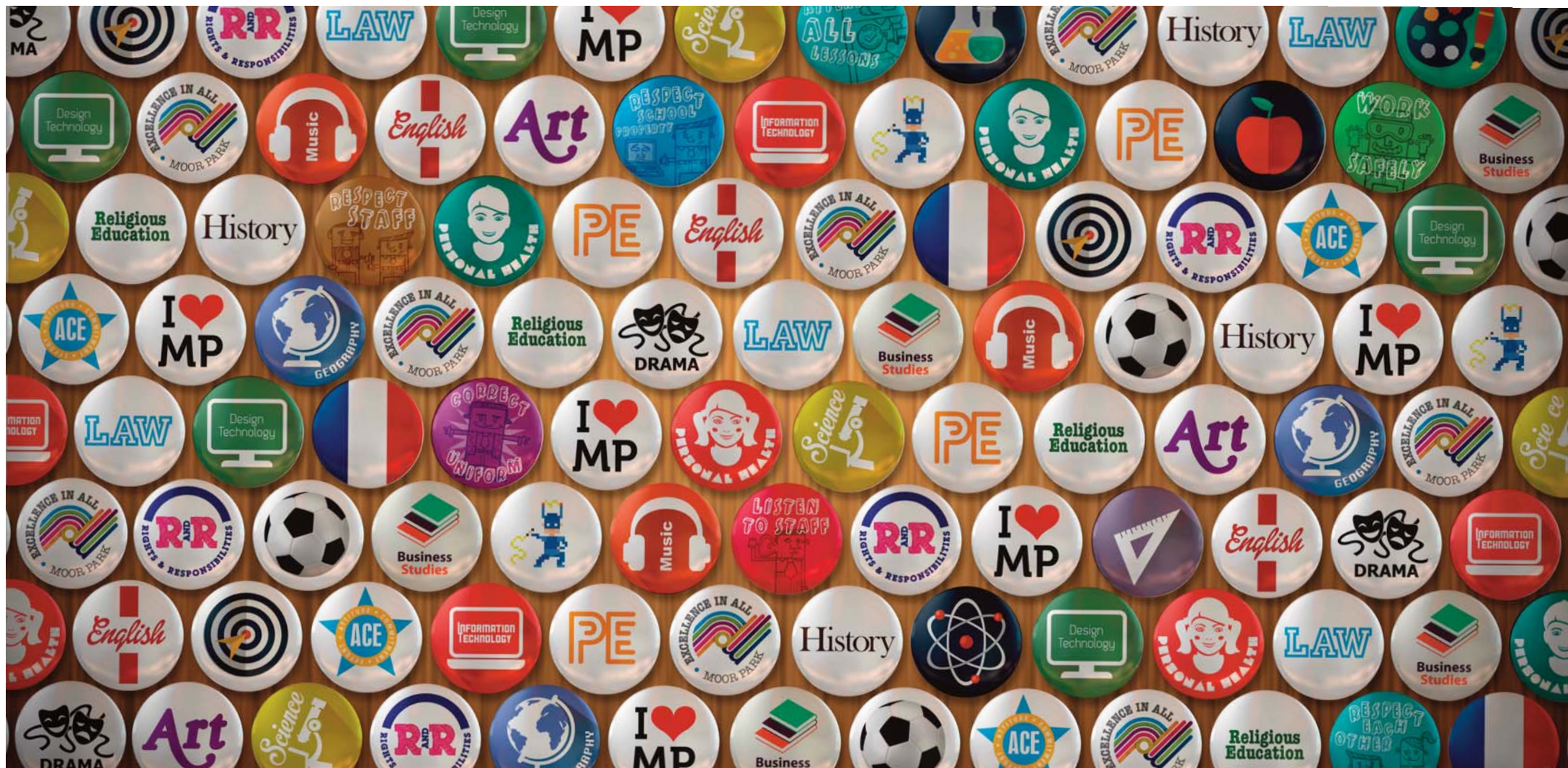
We also understand that moving up to secondary school is a big step for even the most confident of children. That's why we go just that little bit further to make sure every new Year 7 student arrives ready to make the very most of all the opportunities and challenges that lie before them.

To help make the move from Primary to Secondary school as smooth as possible, our new Year 7 students benefit from their own separate Form rooms, separate toilet facilities, wet weather area and dining arrangements.

They are also supported by a caring student progress team, to help ensure they quickly settle into secondary school life. Our work with new students, however, starts much earlier than the day they join us.

In fact, we begin working with them while they are still at Primary school, bringing them to Moor Park in Year 5 for a whole range of exciting 'getting to know us' activities where they make full use of our extensive facilities.





OUR CURRICULUM WHERE WILL YOU EXCEL?

We want every student to enjoy learning, to be naturally curious about the world we live in and to achieve his or her full potential.



A CURRICULUM TO ENCOURAGE AND INSPIRE

In bright, modern and well-equipped classrooms that benefit from the very latest learning technology, our caring subject specialist teachers use a range of learning styles to bring out the very best in each child.

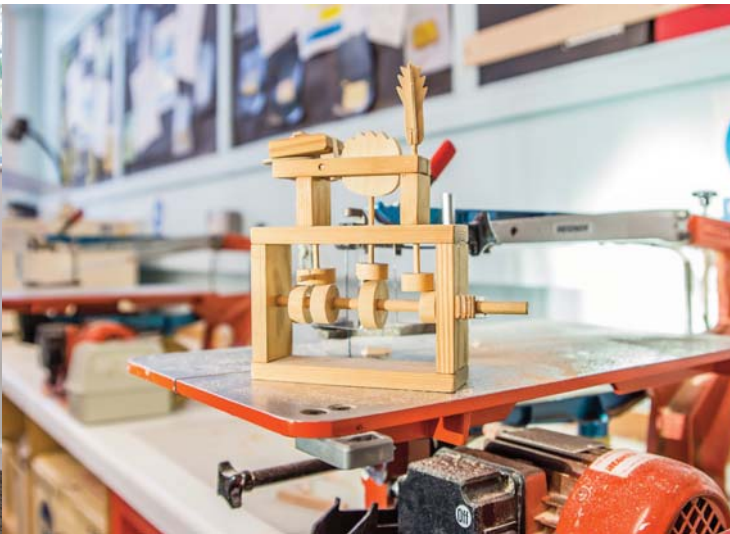
In Years 7 and 8, all students follow the National Curriculum under the guidance of our highly dedicated staff.

During Year 9, students begin to explore the opportunities that will help them make their GCSE and vocational examination choices.

Beyond the curriculum, we offer a wide range of sports, clubs and activities. We run annual trips abroad, plus subject-specific trips throughout the year.

Our curriculum includes:

- Art
- Biology
- Business Studies
- Chemistry
- Computer Science
- Design Technology
- Drama
- English
- Geography
- History
- Mathematics
- Music
- PE
- Performing Arts
- Personal Health and Social Education
- Physics
- Religious Education
- Spanish







WE BELIEVE IN RIGHTS AND RESPONSIBILITIES

At Moor Park, we believe that every member of our school has the right to learn or to teach, the right to feel safe and secure, and the right to be treated with dignity and respect.

In return for those rights, we also believe that every student should be responsible for the way they act - both in school and in our wider community.

Developed in consultation with our students, **'The Moor Park Way'** clearly defines the rights and responsibilities of every individual at our school. It encourages students to arrive on time, fully prepared for lessons and ready to make the most of the school day. It instils the importance of respecting the views, opinions and feelings of others, it helps persuade all students to take full responsibility for their actions and behaviour.

Combined with the efforts of our teachers and pastoral team - and supported by a student rewards system that recognises good behaviour, good work and excellent attendance - **'The Moor Park Way'** is at the very heart of daily school life.





Proud of the wonderful sense of community that exists throughout our school, we aim to develop confident, well-rounded students - young people who will become valued members of modern society.

Firmly believing that every child matters, we have strong, highly successful student support and anti-bullying programmes and we place great importance on teaching good citizenship skills.

Through 'Student Voice', our very own school parliament, we make it simple and straightforward for young people to express how they feel about teaching and learning, as well as other important aspects of school life.

At Moor Park we aim to:

- Develop and promote a positive approach to learning
- Provide high quality teaching
- Engage, challenge and develop all learners
- Set and encourage high expectations
- Enable all learners to make progress, raise their levels of attainment and achieve success
- Improve the opportunities we provide for all





The majority of the Moor Park school year is spent delivering the National Curriculum to students through formal classroom teaching.

However, towards the end of the school year, for five very special days, the conventional timetable is suspended, the lesson bells are switched off and all students are given the opportunity to become completely immersed in our Super Learning programme.

With a focus on having fun while learning, students engage in a range of enjoyable activities that might include anything from team-building initiatives to designing, making and marketing brand new products.

Guest speakers are invited to speak to students including prominent children's authors, visiting theatre groups and representatives from business and industry.

In addition to activities in school, the Super Learning programme also includes trips to museums, art galleries, outdoor adventure centres and a range of other exciting locations.

Our Super Learning programme is always a highlight of the Moor Park year and never fails to capture the imagination and enthusiasm of the whole school.



A SCHOOL FOR SUPER LEARNING





ENRICHING STUDENT EXPERIENCE

A flourishing programme of extra-curricular activities forms a significant aspect of Moor Park's strong commitment to enriching the lives of its students.



We are particularly proud of our highly successful Duke of Edinburgh scheme. Both our Year 10 / 11 and Sixth Form students have embraced the opportunity and challenge of 'D of E' in large numbers with some of them currently pursuing the prestigious Gold Award.



In a thriving Expressive Arts faculty, students make the most of free music tuition by learning a range of musical instruments including violin, guitar, saxophone and the drum kit.

The sporting prowess of Moor Park students is in evidence throughout our various teams who compete against local schools in such sporting disciplines as football, cricket, basketball, table tennis and athletics.

As a school we continually look to invest in facilities which will enhance student experience across the school. Our next large-scale development will be a 'multi-user games area' (MUGA). This brand new outdoor sports area will serve as an impressive complement to our existing sports hall.

We believe that by encouraging a culture of active engagement and participation among our young people we provide them with the best possible opportunity to develop into well-rounded and high achieving individuals.











A SCHOOL THAT IS HIGHLY RATED

At Moor Park we are proud of our recent Ofsted report which commented...
'The school promotes students' spiritual, moral, social and cultural development well within the curriculum and especially through very good provision in citizenship and religious education.'

Students say they feel very safe within the school environment. Students are fully aware of how to use the internet safely and also of the possible dangers of social media websites. Students have great confidence in teachers and the adults who care for them.

Equality and diversity are promoted well across school provision.

The behaviour of students is good. Students play a key role in making the school a harmonious place to work and be in. They have positive attitudes to each other and to the adults. They look after the school and contribute to its tidy and orderly environment. The working relationships of students of all ethnic heritage backgrounds are exemplary.

The school plays an active part in promoting and preparing its students for life in modern Britain.



MOOR PARK STATE/OF/THE/ART SIXTH FORM

WE NOW OFFER 16 - 19 YEAR OLD STUDENTS AN ENGAGING, INSPIRING EDUCATIONAL EXPERIENCE


Our aim is to establish outstanding post 16 educational provision in Moor Park that will be an all round memorable experience in an inclusive ethos, building on the excellent care, guidance and support provided during Year 10 and 11. Our purpose built Sixth Form Centre provides state-of-the-art resources with facilities for personal study and well-equipped areas for students to relax during breaks.

Our vision is to ensure students in Year 12 and 13 in Moor Park are able to realise their potential and achieve their goals, through the provision of post 16 courses that lead to A-Level and equivalent qualifications, alongside a wide range of opportunities, designed to provide individual programmes tailored to the academic development and personal needs of each student in preparation for higher education.

Our students feel safe and are well prepared in tutorial groups on safeguarding and welfare matters. The tutorial programme and curriculum enables them to deepen their understanding of life in modern Britain.







WHAT IS UNIQUE ABOUT OUR SIXTH FORM?

- 100% Pass rate
- Excellent BTEC and A-Level results
- Above national progress and completion rate
 - Ofsted 'Good' in first year of operation
 - Year upon year of improved performance
- Everyone is valued and achieves beyond their potential
 - Personalised academic guidance and care
 - Excellent enrichment programme
 - Aspirational and friendly environment

INSPIRING EXCELLENCE



MOOR PARK HIGH SCHOOL AND SIXTH FORM

Moor Park Avenue Preston Lancashire PR1 6DT

01772 795428 admin@moorpark.mp www.moorpark.mp